



South of the Kern River (SOKR) Sustainable Groundwater Management Act (SGMA) Stakeholder Workshop

Topic: SOKR Groundwater Sustainability Plan (GSP) Update - Kern County Subbasin
When: Tuesday, June 7th, 2022 @ 10:00 am
Where: Arvin-Edison Water Storage District Headquarters – Pump Shop
 20401 East Bear Mountain Boulevard, Arvin, California 93203
 Or Virtually: <https://us06web.zoom.us/j/83559831177?pwd=UFhOOVVEVXVvVEJDeXE3VnZiTG9KZz09>
 or Call in: +1 669 900 6833
 Meeting ID: 835 5983 1177 Password: 715425

You are invited by the Arvin Groundwater Sustainability Agency (GSA), Wheeler Ridge-Maricopa GSA, Tejon-Castac Water District GSA (collectively, the “SOKR GSAs”), and Arvin Community Services District to attend a public workshop on Tuesday, June 7th, 2022, from 10:00 am to 12:00 pm to discuss the development of an amended Groundwater Sustainability Plan (the “SOKR GSP”) for the area covered by the SOKR GSAs in the Kern County Subbasin (Basin).

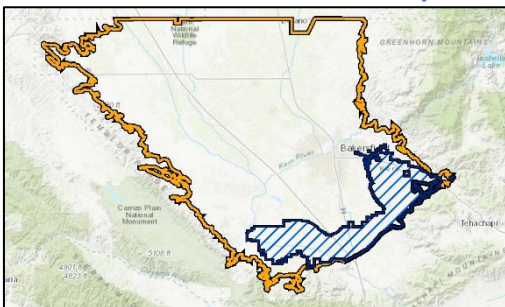
The SOKR GSAs will provide an overview of the current SGMA process in the Basin, including the California Department of Water Resources (DWR) review of the 2020 Kern Subbasin Plan. This workshop will also include a presentation on the current status of the SOKR GSP development in response to the DWR comments. We will also look ahead toward next steps for SOKR GSP development and submittal. More information can be found at each of the SOKR GSAs’ websites.

If you are planning to attend this workshop, please RSVP to Sherry Jauch at (661) 854-5573 or arvined@aewsd.org by Thursday, June 2nd. Thank you and we look forward to seeing you at the workshop.

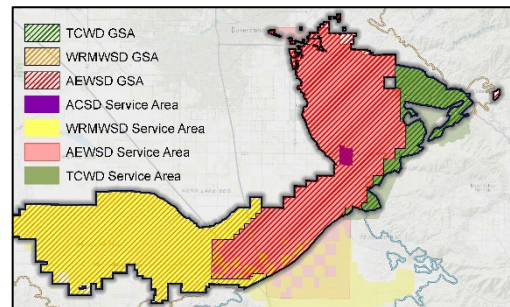
Key SGMA elements:

- Basins must be managed by GSAs
 - The SOKR GSAs were formed in March 2021
- GSAs must develop GSPs; amended GSPs for the Kern County Subbasin are due July 27th, 2022
 - The SOKR GSAs are working to combine and revise chapters of the Management Area Plans they developed in 2020 as part of the Kern Groundwater Authority (KGA) GSP into a separate and comprehensive SOKR GSP that addresses DWR’s comments and is coordinated with other Basin GSPs.
- Basins must achieve clearly-defined sustainability criteria within 20 years of GSP adoption
 - Performance assessment: The SOKR GSP will demonstrate a plan for achieving sustainability and will be updated and reviewed every five years.

SOKR GSP Area Within the Kern County Subbasin



SOKR GSA Areas



Preliminary – Subject to Revision